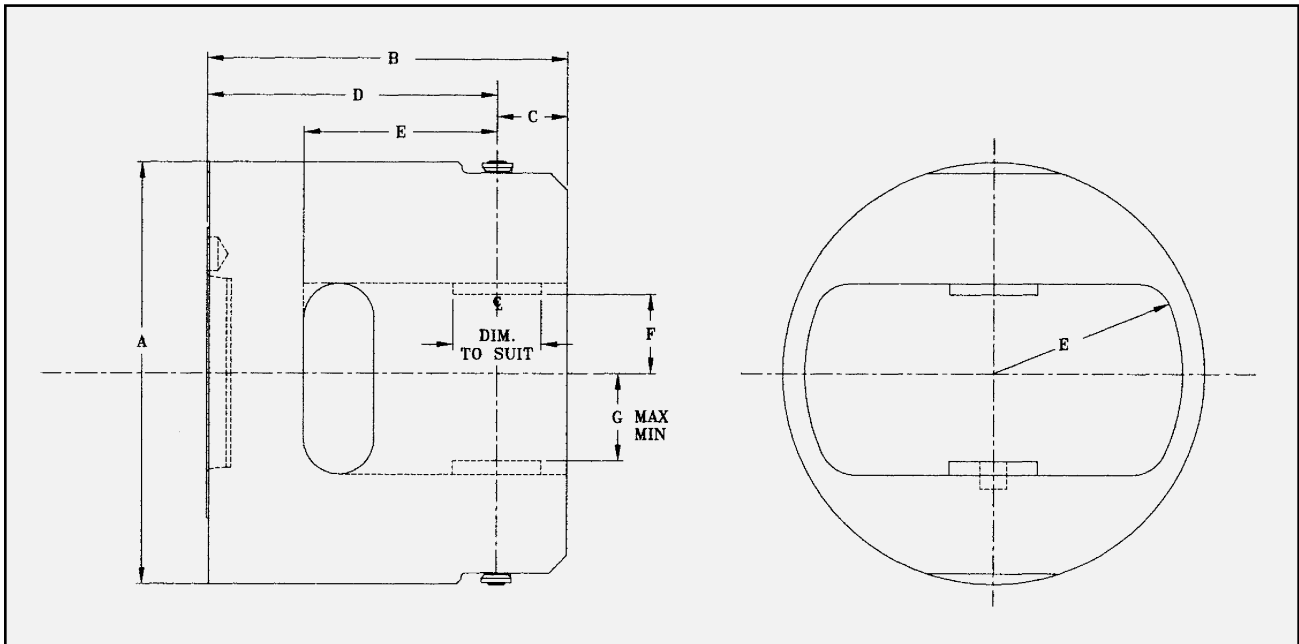


802 Series High Speed Automatic Index Chucks



Chuck Size	8"	10"	12"	14"	16"	18"	21"	24"
A	8.25	10.25	12.50	14.50	16.00	18.50	21.00	24.00
B	8.88	10.00	11.00	11.75	13.00	14.13	16.12	19.50
C	1.69	1.88	2.00	2.00	2.50	2.50	3.50	4.50
D	7.19	8.12	9.00	9.75	10.50	11.62	12.62	15.00
E	3.63	4.50	5.50	6.25	7.00	8.12	9.12	10.50
F	1.06	1.68	2.24	3.24	3.74	4.75	5.75	6.75
G (max. open)	1.75	2.13	2.49	3.49	4.00	5.00	6.00	7.00
F (min. closed)	0.94	1.32	1.58	2.58	2.75	3.75	4.00	5.00



Typical parts that have been held and machined quickly and accurately in Royal's Index Chucks, reducing cycle times up to 70%.