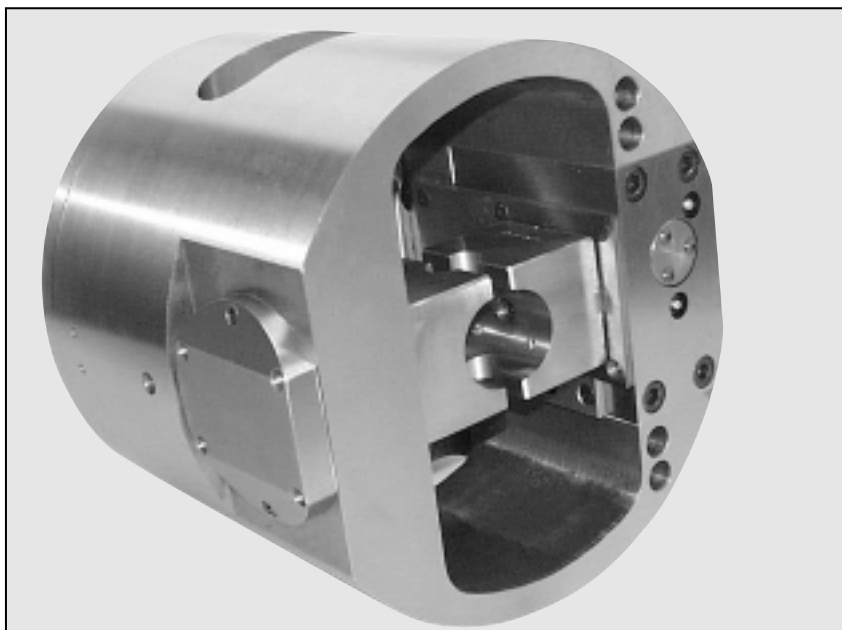


802 Series High-Speed Automatic Index Chucks

Royal High Speed Automatic Index Chucks

- Maximize production rates with a single step set-up for multi-sided parts with intersecting axes.
- High clamping force with centrifugal force compensation allows high rotational speeds, permitting high metal removal rates.
- Fast, accurate indexing with rigid index lock assures quick and accurate machining of multi-faceted parts.
- Royal's index control system with electronic interface allows complete CNC control of the Automatic Index Chuck.



- *One Index Jaw and One Clamp Jaw.*
- *Hydraulic Clamping and Indexing.*
- *4 x 90, 8 x 45, 3 x 120, 6 x 60 Index Positions.*
- *Special Odd Spacings also available.*
- *Indexing Accuracy of .00025" per inch of radius.*
- *Life Cycle Test shows no significant wear in 1,000,000-plus cycles.*
- *Installation Assistance Available.*

Patented Indexing System

Royal's 802 Series High-Speed Automatic Index Chucks are designed for today's CNC turning centers. A patented cylinder-operated linear index mechanism provides quick, accurate indexing while the spindle is rotating.

Centrifugal Force Intensifier

Royal incorporates a hydraulic centrifugal force intensifier that reduces the loss in clamping pressure due to centrifugal force, permitting high cutting speeds.

Index Position Control System

Royal's fail-safe index control system utilizes a cam-operated tell-tail rod, four proximity switches, a PC-based electronic NC control interface, and a hydraulic power unit with all the valving and sensing to provide complete control of the automatic index chuck.

Specifications 802 Series

Chuck Model	8 802-08	10 802-10	12 802-12	14 802-14	16 802-16	18 802-18	21 802-21	24 802-24
Mounting	A5/A6	A6/A8	A6/A8	A8/A11	A11	A11/A15	A11/A15	A15/A20
Clamp Stroke	0.81	0.81	0.91	0.91	1.25	1.25	2.00	2.00
Grip Position	1.14	1.52	1.80	2.80	3.06	4.06	4.50	5.50
Hydraulic Pressure (psi)	1,000	1,000	1,000	1,000	1,000	1,000	1,000	1,000
Clamp Force (lbs.)	6,490	6,490	10,320	10,320	15,900	15,900	28,275	28,275
Maximum Speed (rpm)	3,000	3,000	3,000	3,000	2,500	2,200	1,800	1,300